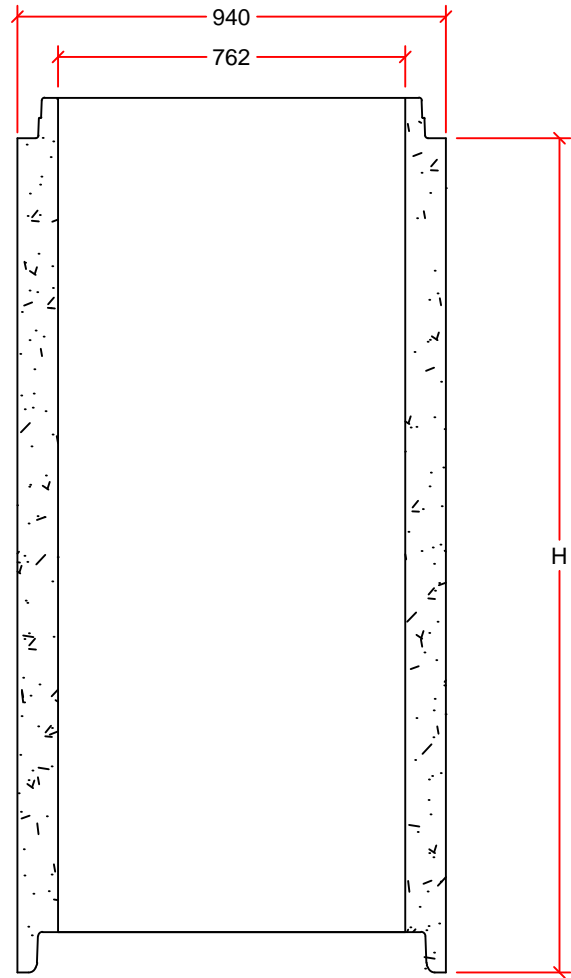
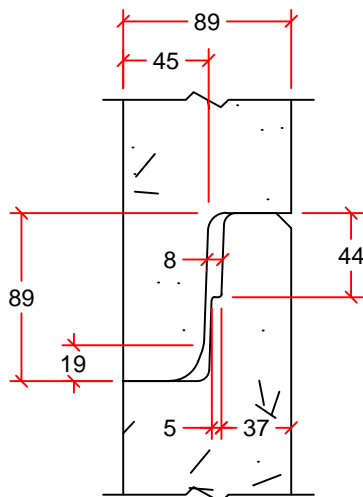


CATCH BASINS AVAILABLE IN 0.31m, 0.46m, 0.61m, 0.92m, 1.22m, AND 1.83m LENGTHS



RISERS AVAILABLE IN 0.15m, 0.31m, 0.46m, 0.61m, 0.92m, 1.22m, AND 1.83m LENGTHS



JOINT DETAIL

CB HEIGHT (H) (mm)	RISER HEIGHT (H) (mm)	WEIGHT (KG)	SUMP (S) (mm)	D (mm)
310	-	350	0	127
460	-	435	0	152
610	-	525	75	203
920	-	705	75	203
1220	-	880	600	203
1830	-	1235	600	203
-	150	90	-	-
-	310	180	-	127
-	460	270	-	152
-	610	360	-	203
-	920	540	-	203
-	1220	710	-	203
-	1830	1070	-	203

DRAWN BY:	SAM HAN
SCALE:	NTS
DATE:	NOVEMBER 16, 2015
DRAWING #:	750mm CB
REVISION #:	REV. 1
CHECKED BY:	TYSON DYCK

750mm CATCH BASIN

DIMENSIONS IN mm  
INNER POUR BASE

**INLAND**  
**Pipe**

2494 FERRIER ST. WINNIPEG, MB.  
PH: 204 334-4300 FAX: 204 334-7957